

VectorVest ProTrader

From The Industry Leader in Stock Analysis

QUICK START GUIDE

VectorVest ProTrader for RealTime

Bringing technical analysis into the real-time environment. ProTrader makes technical analysis easier than ever. You can run searches on you favorite indicators to identify trading signals in real-time, such as crossovers on MACD. Verify the results with the best graphs available anywhere.



VectorVest ProTrader Searches

The ProTrader technical analysis tool was designed to search for certain patterns of price behavior in stocks, WatchLists, Industry Groups, Business Sectors, and Portfolios.

The initial ProTrader release will contain a limited set of searching capabilities, but a significant number will be added over time:

- MACD Crossovers
- Moving Average Crossovers (*exponential, weighted, or simple*)
- Detrended Price Oscillator Crossovers
- Envelope Crossovers
- And Many More!

These searches can be run quickly and easily in ProTrader, which allows customization of its tools based on your preferences, time constraints, and personal trading & investment goals. Additionally, multiple searches can be run at the same time using the UniSearch tool to locate stocks meeting multiple criteria and target patterns! The UniSearch tool combines both fundamental and technical indicators in a single search, providing exemplary levels of flexibility and power in stock research.

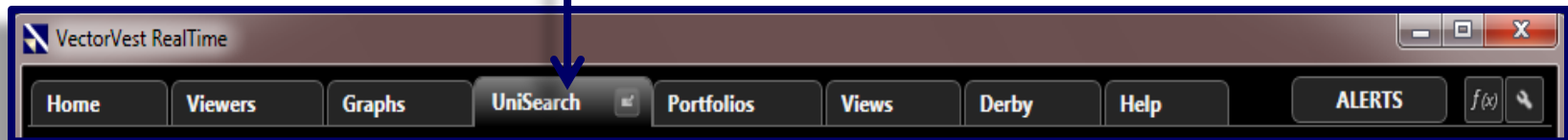
All of these tools can be selected by accessing the UniSearch tool and indicating the desired searches from the list at the left edge of the screen.

We suggest that you try each tool individually to examine its behavior and learn its capabilities.

How to Create a ProTrader Search

Creating a ProTrader search in VectorVest RealTime is a simple, yet powerful process. To create a search, follow these steps:

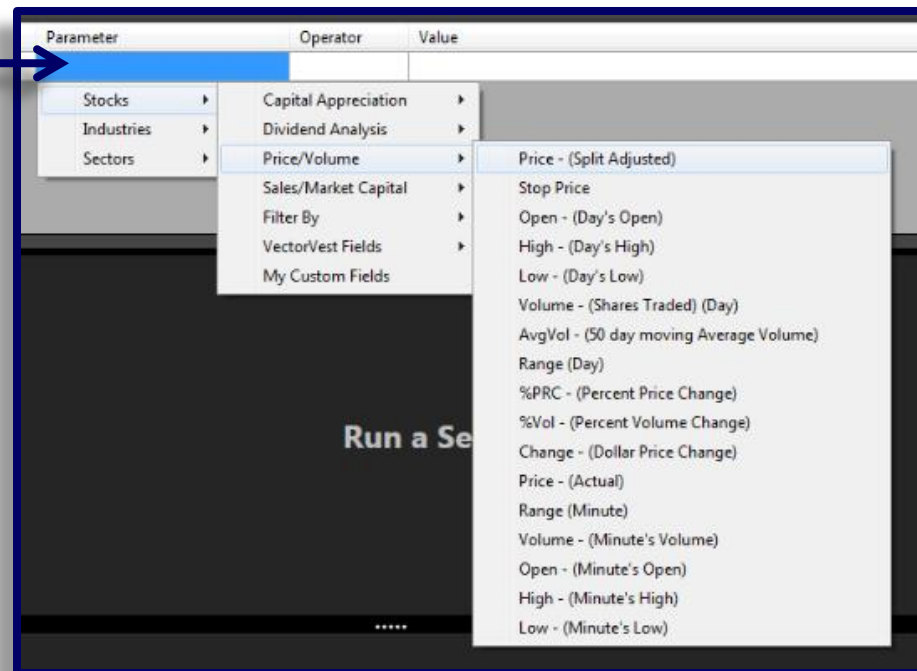
1. Click on the UniSearch Tab.



2. Click in the *Parameter* field located in the first row of the UniSearch grid.

A menu will appear.

3. Highlight *Stocks*, then *Price/Volume* and finally select *Price - (Split Adjusted)*.



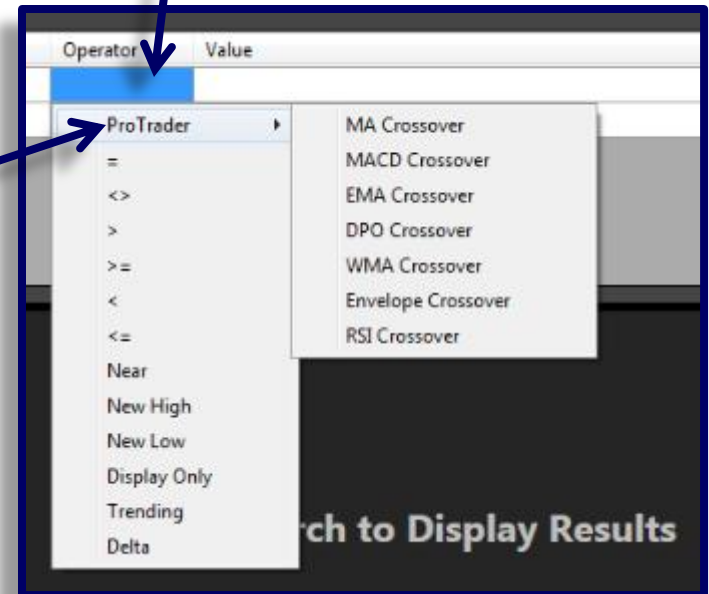
How to Create a ProTrader Search

4. Next, click on the *Operator* field. A ProTrader Menu will appear.

5. Click on *ProTrader* to expand the list of available technical analysis tools to the right.

6. Select your ProTrader operator from the list by clicking on it.

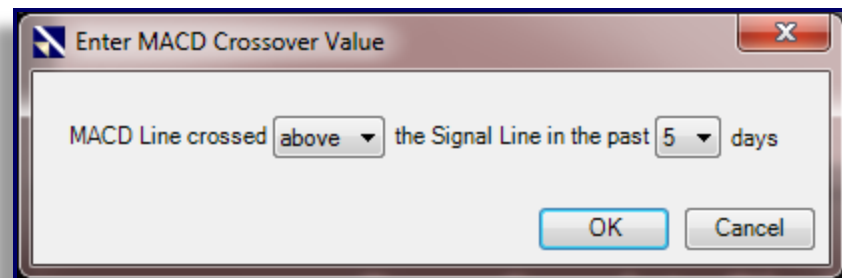
7. Finally, click on the *Value* field.



8. A settings dialog box will be displayed.

Verify the settings and click *OK*.

You're done!



VectorVest ProTrader Graphs

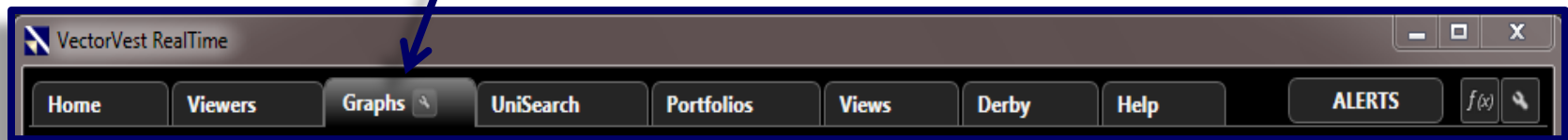
In continuing our tradition of excellence within the technical analysis field, VectorVest welcomes you to the ProTrader Technical Graphing Module!

This new addition to your software puts the power of Technical Graphing right at your fingertips from any portion of the VectorVest System. ProTrader technical analysis has been embedded directly in the standard VectorVest Graphs, and adding ProTrader parameters to a graph is a very straightforward process.



How to Add ProTrader Features to a Graph

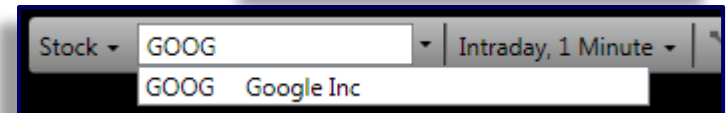
1. Open the *Graphs* tab.



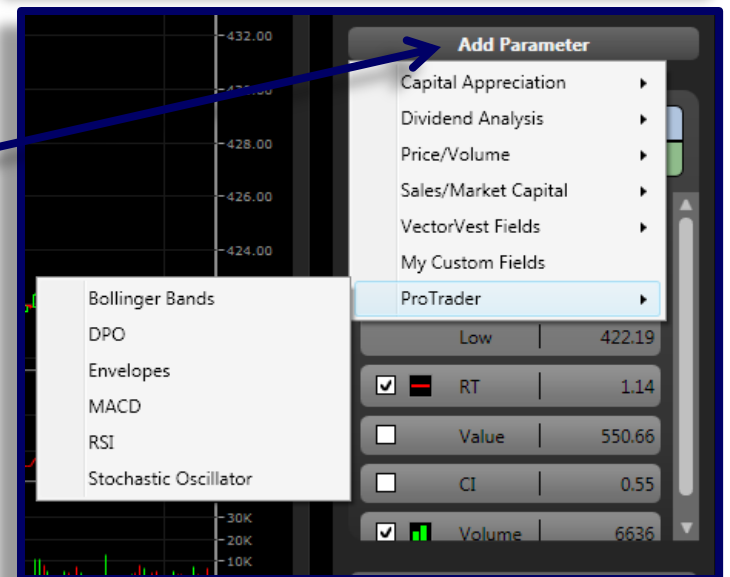
2. Click in the *Stock* textbox, and enter the symbol you would like to graph.



Note that symbol suggestions are provided as you type.



3. Click on the *Add Parameter* button in the upper right hand corner.



4. Click on *ProTrader*, and a menu of available parameters will appear.

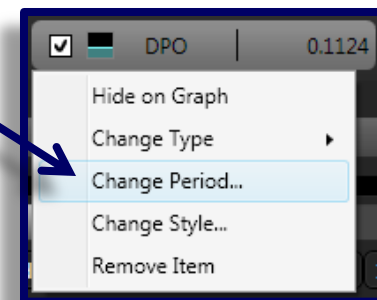
Select the parameter you would like to graph.

How to Add ProTrader Features to a Graph

5. Once the item is added to the parameter list, click on it to display it on the graph.



6. To modify any of the settings of a ProTrader parameter, just right-click on the parameter and select *Change Period...*



7. A dialog box will appear for you to modify the settings of the parameter.